

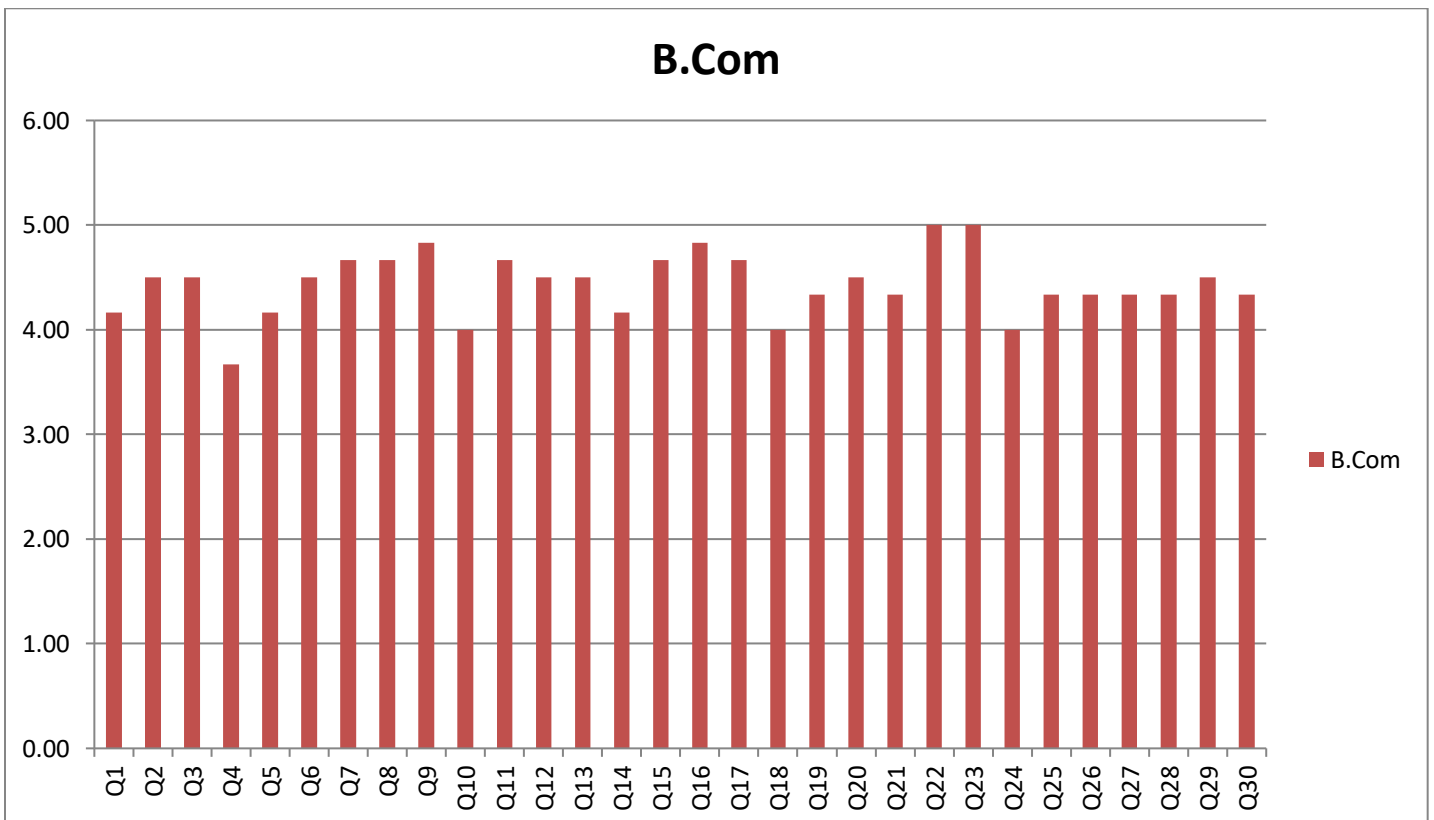
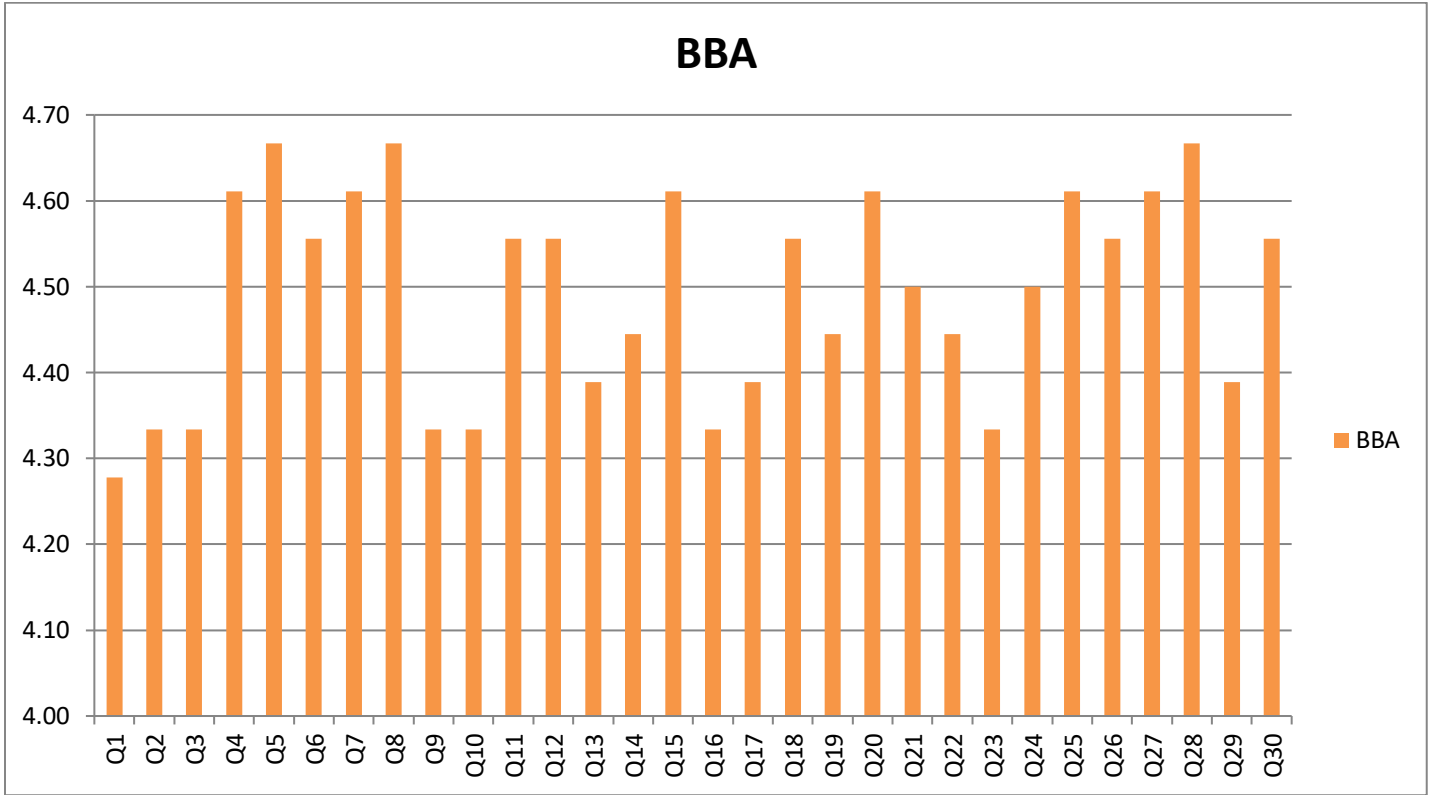


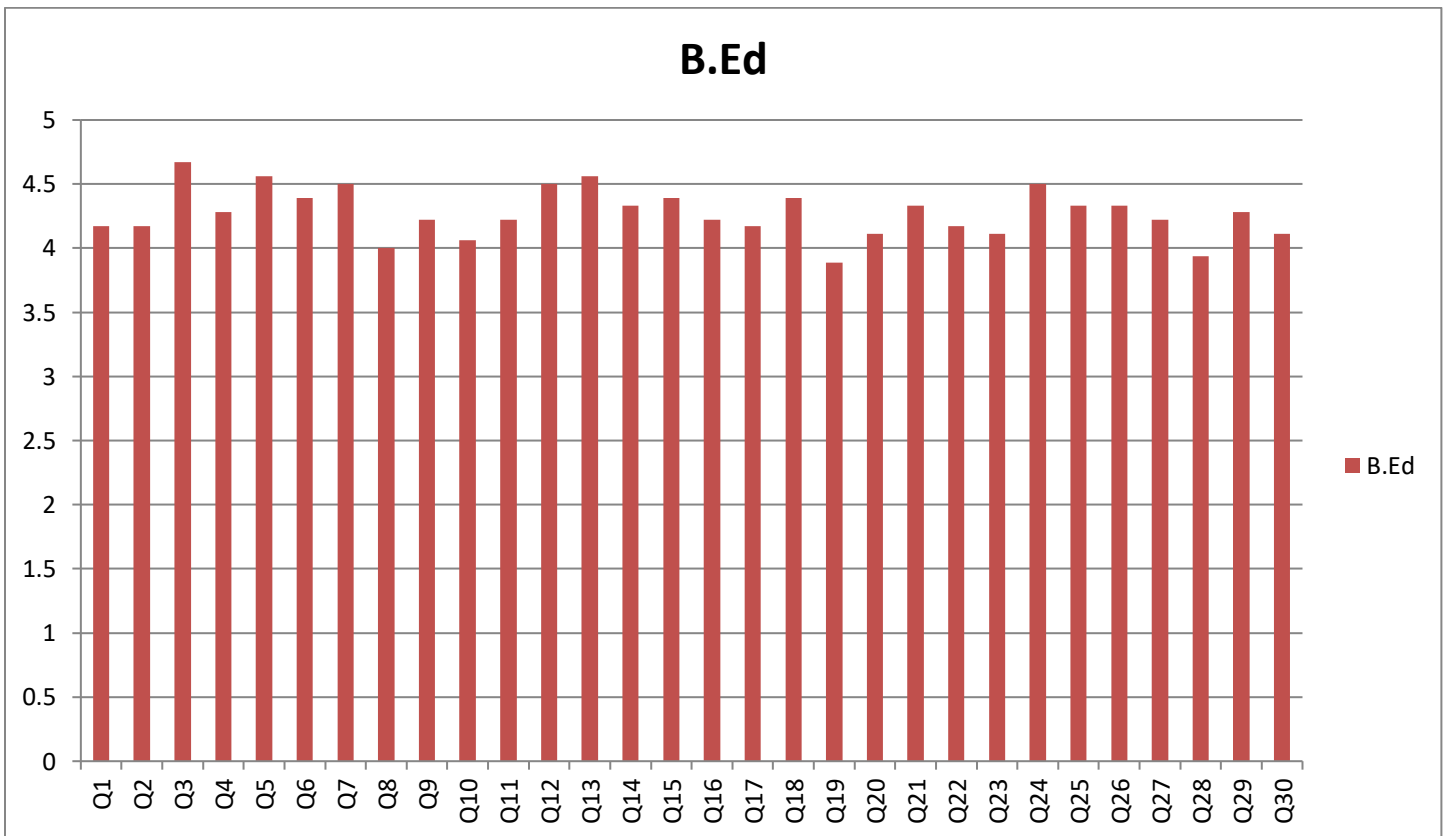
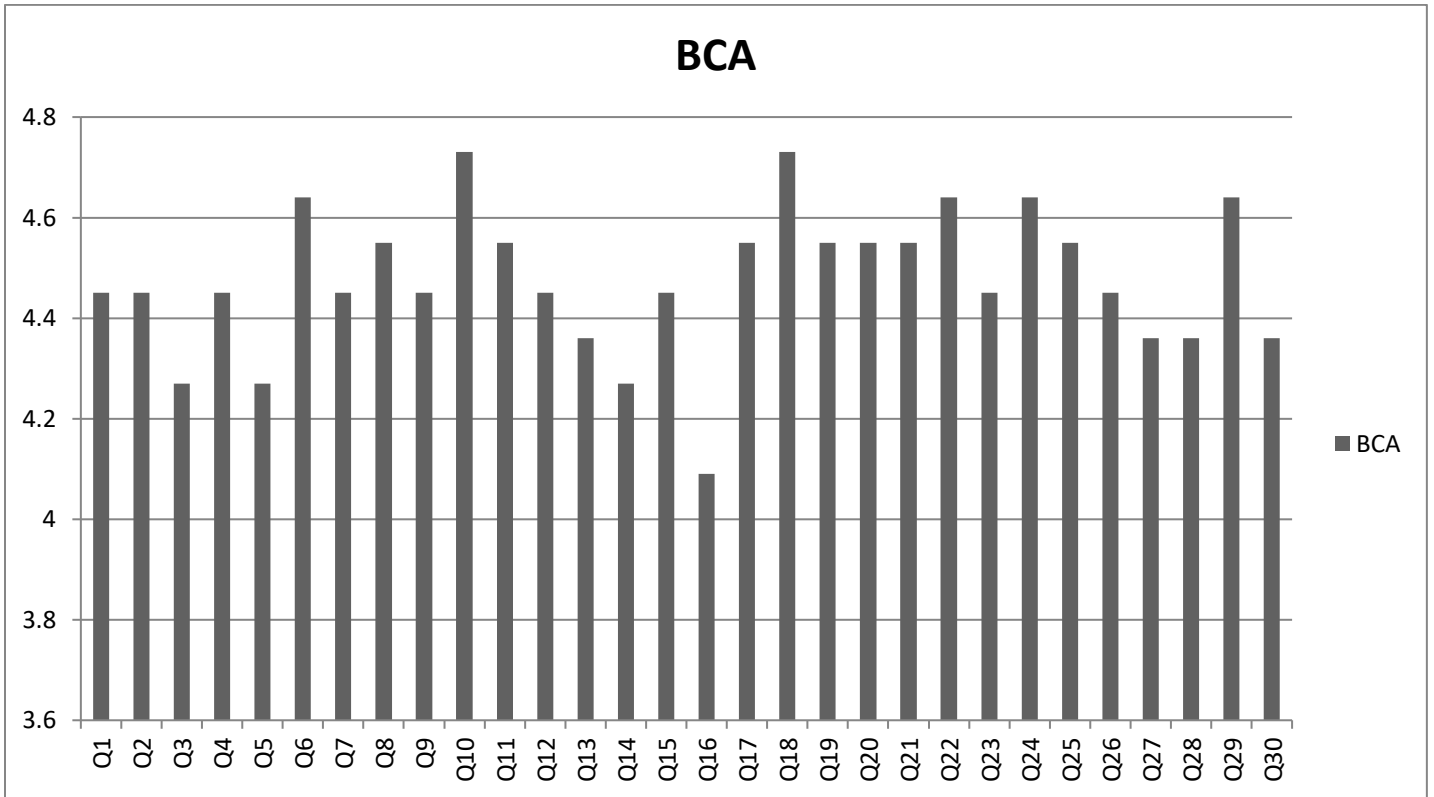
Analysis of Faculties Feedback Form (2020-21)

S. No.	Questions	B.B.A.	B.Com.	B.C.A.	B.Ed.	B.A. B.Ed.	B.Sc. Bio. tech.
1	Syllabus content is relevant to the course.	4.28	4.17	4.45	4.17	4.17	4.25
2	Syllabus is need based	4.33	4.50	4.45	4.17	4.17	4.32
3	Objectives and Outcomes are well defined.	4.33	4.50	4.27	4.67	4.67	4.49
4	Curriculum is sufficient to meet the program outcomes.	4.61	3.67	4.45	4.28	4.28	4.26
5	Course content is well supported by reference material.	4.67	4.17	4.27	4.56	4.56	4.44
6	Course is oriented towards skill development/employability of students.	4.56	4.50	4.64	4.39	4.39	4.50
7	Course curriculum is contemporary and prepares the students for industry/higher education	4.61	4.67	4.45	4.50	4.50	4.55
8	Curriculum ensures student participation in the learning process.	4.67	4.67	4.55	4.00	4.00	4.38
9	Curriculum addresses local, national and global needs.	4.33	4.83	4.45	4.22	4.22	4.41
10	Curriculum promotes self-learning.	4.33	4.00	4.73	4.06	4.06	4.24
11	Curriculum has increased my knowledge & perspective in the subject area.	4.56	4.67	4.55	4.22	4.22	4.44
12	Faculty members participate in the designing and developing the value added/add on course curriculum.	4.56	4.50	4.45	4.50	4.5	4.50
13	The Institute encourages participatory decision making by involving employees at various levels.	4.39	4.50	4.36	4.56	4.56	4.47
14	Faculty members have the freedom to adopt new techniques / strategies of teaching such as group discussions, seminar, presentations, etc.	4.44	4.17	4.27	4.33	4.33	4.31
15	The examination and evaluation system followed by the Institute is effective in judging students' academic performance.	4.61	4.67	4.45	4.39	4.39	4.50



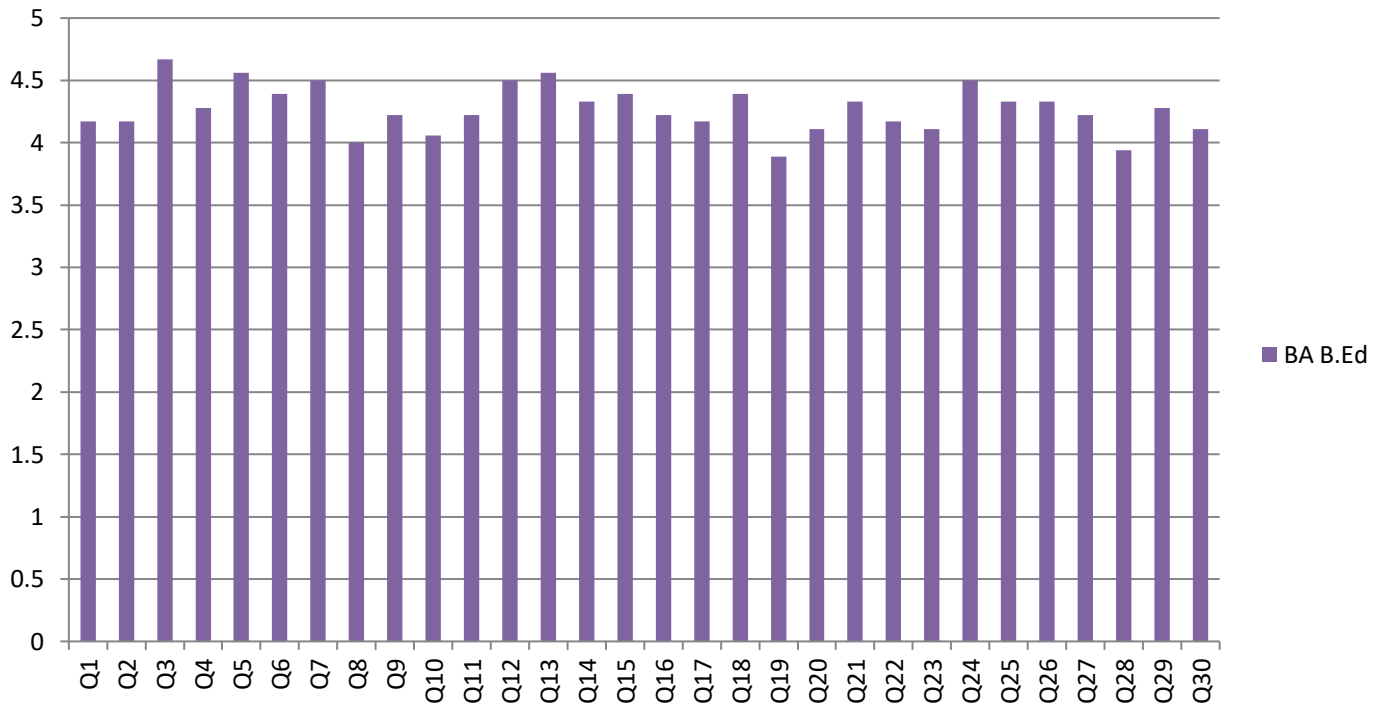
16	The library is adequately equipped with different learning resources, including books, journals, e-resources etc.	4.33	4.83	4.09	4.22	4.22	4.34
17	The library is optimally used by the faculty, students and research scholars	4.39	4.67	4.55	4.17	4.17	4.39
18	The timings of the library as well as the procedure for issue/return of books in the library are convenient.	4.56	4.00	4.73	4.39	4.39	4.41
19	The Institute has taken initiatives to encourage research.	4.44	4.33	4.55	3.89	3.89	4.22
20	The Institute supports the participation of faculty in national and international conferences / seminars / symposia by providing academic leave and financial support.	4.61	4.50	4.55	4.11	4.11	4.38
21	ICT facilities available to the faculty at the Institute are adequate and satisfactory	4.50	4.33	4.55	4.33	4.33	4.41
22	The classrooms and furniture available are adequate, clean and are well maintained.	4.44	5.00	4.64	4.17	4.17	4.48
23	The toilets are sufficient, clean and well maintained.	4.33	5.00	4.45	4.11	4.17	4.40
24	The labs are adequately equipped for hands-on training of students (if applicable) and research	4.50	4.00	4.64	4.50	4.50	4.43
25	Medical facilities provided by the Institute are adequate.	4.61	4.33	4.55	4.33	4.33	4.43
26	The Institute administration is approachable and faculty-friendly	4.56	4.33	4.45	4.33	4.33	4.40
27	The Institute provides adequate opportunities and support to faculty for their academic growth.	4.61	4.33	4.36	4.22	4.22	4.35
28	The Institute has an effective grievance redressal system.	4.67	4.33	4.36	3.94	3.94	4.25
29	The institute has effective welfare measures for the employees	4.39	4.50	4.64	4.28	4.28	4.42
30	Faculty are free to express and share their opinions, ideas and suggestions.	4.56	4.33	4.36	4.11	4.11	4.29







BA B.Ed



B.Sc. Biotech

